

# Leadership Journey

**Timothy J. Herrick**

**Husband, Father, Friend, Leader**

**Founder of The Leader Foundry**

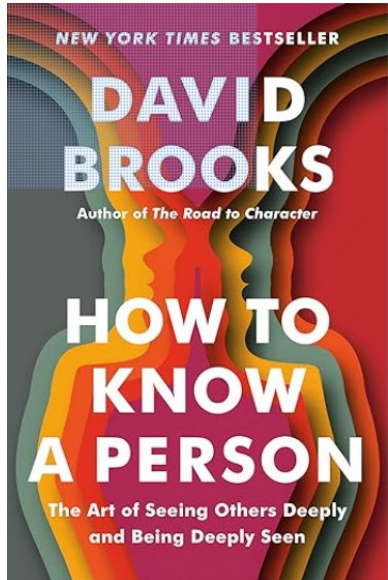
**Acting Director of The Leadership Development Institute**



**“Leadership is not everything,  
it’s the only thing.”**

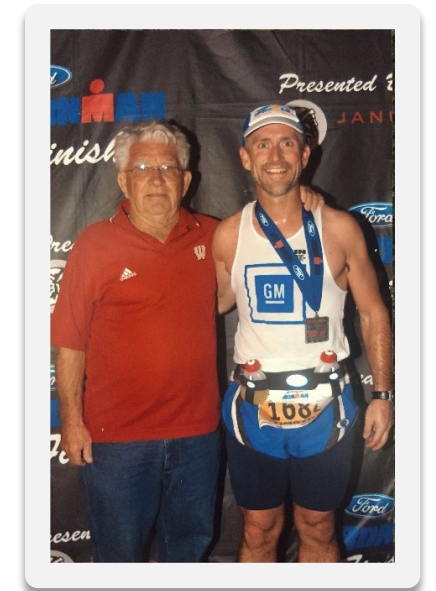
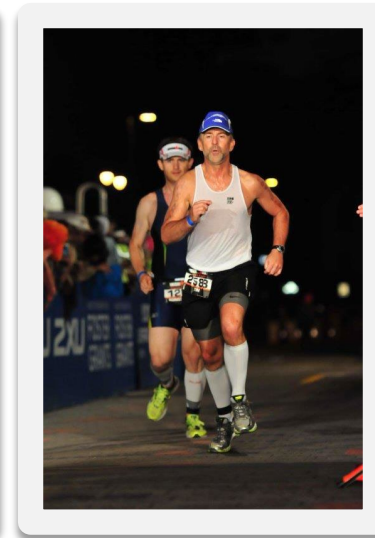
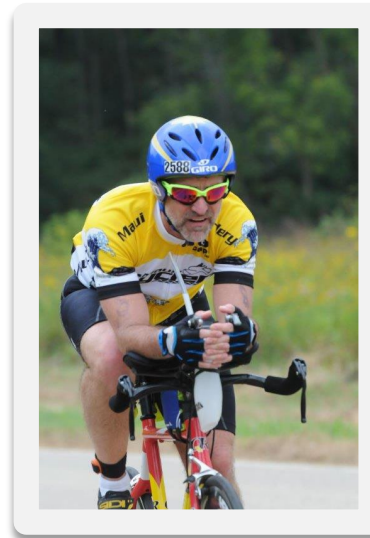
**– Vince Lombardi - ish**

# A story about a leadership journey



“Sure, it works in practice, but does it work in theory?”

Slow is smooth; smooth is fast!



# Leadership Ecosystem



**Doing**



**Observing**

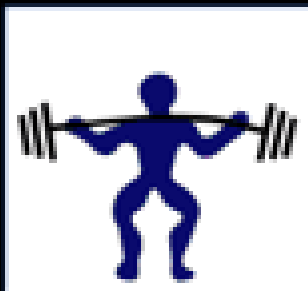


**Connecting**



**Your pace, Your race!**

# LEADER FOUNDRY



**Strong**  
Know and Play to  
your Strengths

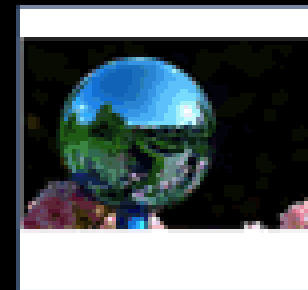


**Malleable**  
Adapt to Change  
and Stress

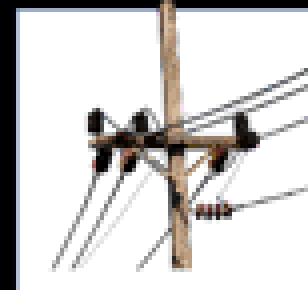


**Can Do Work:  
Purpose and Service**

**Reflective**  
Shine light  
around you



**Conductive**  
Work with and  
through others



**LEADER  
FOUNDRY**

501(c)(3) nonprofit group

# Leader Foundry Who We Are

The Leader Foundry is dedicated to identifying and developing the next generation of leaders through coaching, mentorship, and scholarships.



**LEADER**  
FOUNDRY  
501(c)(3) nonprofit group

<http://leaderfoundry.org/>

[leaderfoundry.org](http://leaderfoundry.org/)

# What we found.....



**Leaders!**

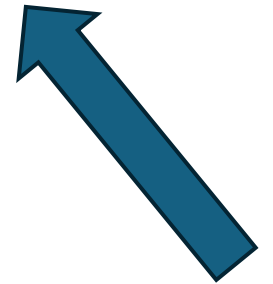
# Oakland University's Leadership Development Institute



**LEADER**  
FOUNDRY



**OAKLAND**  
**UNIVERSITY**<sup>TM</sup>



# LDI's Journey



## Join the Founding Cohort!

The School of Engineering and Computer Science (SECS) and the School of Business Administration (SBA) are launching the prototype phase of Oakland University's NEW Leadership Development Institute (LDI). Be part of the founding group to:

- Develop your leadership potential through the CARVE framework
- Compete for scholarships
- Help shape the design for the full Fall 2026 launch

## Stage 1:

### CARVE Lecture Series\*

February – March 2026

- Five one-hour sessions taught by OU faculty and industry leaders
- Each session targets one dimension of the CARVE leadership model:
  - Collaborative – Building effective interdisciplinary teams
  - Adaptable – Thriving in dynamic environments
  - Reflective – Developing self-awareness and continuous growth
  - Visionary – Leading with innovation and purpose
  - Ethical – Making principled decisions in complex situations

\*Attendance is required to advance

## How to Apply

Cohort Limit: 30 SECS and SBA students

Email your application to: [LDI@oakland.edu](mailto:LDI@oakland.edu)

Deadline: December 15, 2025

Include:

1. Your name
2. Your major and student status (freshman–senior)
3. A brief two-paragraph statement describing:
  - Why you want to develop your leadership skills
  - How you would contribute to a cross-disciplinary team

Notification: Accepted applicants will be informed by December 22, 2025.

## Stage 2:

### Case Study Competition

March – April 2026

- Interdisciplinary teams of 4–5 students
- Analyze real-world business-engineering challenges
- Present solutions to a panel of faculty and industry judges

## Scholarships

\$10,000 in Total Awards Provided by Leader Foundry

- 1st Place – \$5,000 per team
- 2nd Place – \$3,000 per team
- 3rd Place – \$2,000 per team

(Scholarships can be applied toward OU educational expenses or paid directly to graduating seniors)



## Join the Founding Cohort!

The School of Engineering and Computer Science (SECS) and the School of Business Administration (SBA) are launching the prototype phase of Oakland University's NEW Leadership Development Institute (LDI). Be part of the founding group to:

- Develop your leadership potential through the CARVE framework
- Compete for scholarships
- Help shape the design for the full Fall 2026 launch

# LDI's Journey

## Stage 1: CARVE Lecture Series\*

February – March 2026

- Five one-hour sessions taught by OU faculty and industry leaders
- Each session targets one dimension of the CARVE leadership model:
  - **C**ollaborative – Building effective interdisciplinary teams
  - **A**daptable – Thriving in dynamic environments
  - **R**eflective – Developing self-awareness and continuous growth
  - **V**isionary – Leading with innovation and purpose
  - **E**thical – Making principled decisions in complex situations

## Stage 2: Case Study Competition

March – April 2026

- Interdisciplinary teams of 4–5 students
- Analyze real-world business-engineering challenges
- Present solutions to a panel of faculty and industry judges

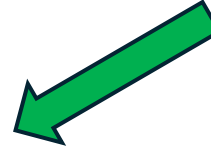
### Scholarships

**\$10,000 in Total Awards Provided by  
Leader Foundry**

- 1st Place – \$5,000 per team
- 2nd Place – \$3,000 per team
- 3rd Place – \$2,000 per team

**LEADER**  
FOUNDRY

You are here!



**“Leadership is not everything,  
it’s the only thing.”**

**– Vince Lombardi - ish**

**Your pace, Your race!**